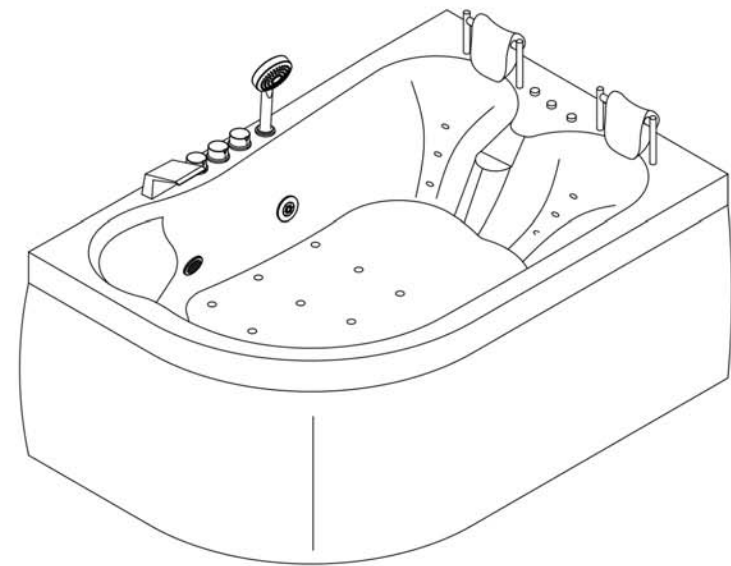


INSTALLATION GUIDE

OLS-6033

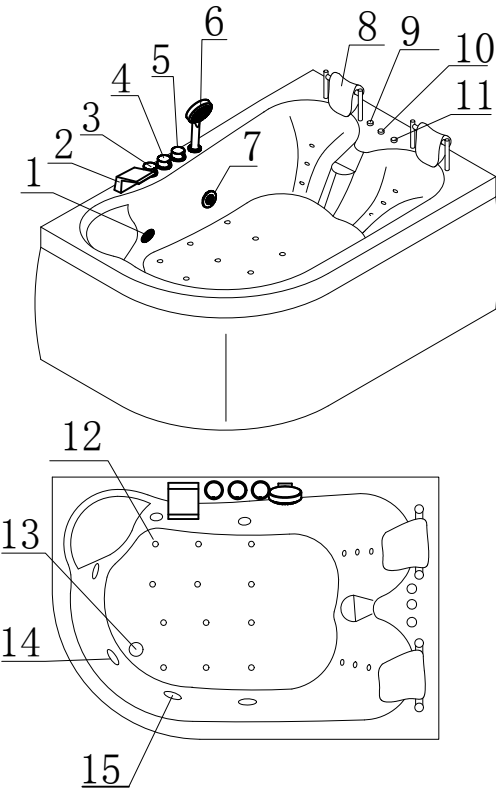
Bathtub



MASSAGE BATHTUB INSTRUCTION

MODEL: OLS-6033

Thank you for owning bathtubs. In order to assure the safety, please read the instruction carefully before installation.



- | | | |
|---------------------|---------------------|---------------------------|
| 1、back water | 2、inlet | 3、Hot water valve |
| 4、switch valve | 5、cold water valve | 6、hand shower |
| 7、big jet | 8、pillow | 9、Water pump start switch |
| 10、lampstart switch | 11、regulating valve | 12、small jet |
| 13、drainer | 14、overflow | 15、Underwater lamp |

II、Electrical/Watery requirements

2.1 Switch controled by main power supply:Install a small circuit breaker which has electricity leakage protection and with 32A anti-water. It can be installed in a place that can be easily operated. Please cut off the power supply after every usage, to make sure the computer control system safety. (shown as following A)

2.2 power supply: rated voltage 220V/50Hz,10A anti-water socket, three-core 4 mm² copper cable. The socket should be placed as out as possible, which is convient for maintenance. (shown as following B)

2.3 water supply: G1/2 cold-hot water hose each, both hoses should be installed with shut-off valve. (shown as following C)

2.4 Draining: try to focus on draining position shown in the drawing. If not, the drainer should be placed within 200mm from drainer position,and the dimaetere should be less than 50mm(shown as following D)

2.5 Maintenance area: Please leave space 500mm or more around the bathtub for future maintenance. Please do not install any fixed objects in this free area. (shown as following E)

2.6. Grounding wire: Its resistance is 4ohm or less.

Note:

The water pressure of this product must be between 0.1-0.4MPA. It may influence the function of the product if out of this range.

Please install the booster pump if water pressure is too low (please prepare the booster pump by yourself).

3. Don't use the excessive hot water. When filling up the bathtub, cold water should be first, hot water followed. Don't start pump until water is reaching up as high as position of nozzle.
4. Cut power off each time after use.

VII、FAULTS AND SOLUTION

Faults	Reasons	Solutions
Pump failure	Failure to connect with power supply, or circuit-breaker is disconnected	Turn power on or switch on circuit-breaker
	Plug is out of socket outlet	Keep the plug in its place
	Abnormal power supply	Check power cable
	Control box failure	Change it
	Pump impellers get jammed	Remove things off
	Pump failure	Repair or change it
	Control panel failure	Change it
Pump is running, no water come out of nozzle	The impeller is in the idle state when motor is running.	Change the impeller
	Backflow screen is clogged or air leakage happens to its pipe	Clean backflow screen and remove leakage pipe
Failure to adjust jet strength	Abnormal current	Check voltage
	Failure of magnetic valve	Change it
	Backflow screen is blocked	Clean it
Bathtub slope	Foot screw problem	Adjust the foot screw
Pipe leakage	Problem with seal rubber	Change it
	The nut is getting loose	Make it tight
	Poor joint point at connection of pipe	Resume connection at joint place

Remark:

1. While the massage bathtub fails to work, the user is suggested to refer to the above table for checking, finding solutions to these problems.
2. The massage bathtub is in a very damp situation during use. Besides the manufacturer's safety measures, in order to ensure the user's safety, the installation of electric parts should be conducted with qualified electrician; at the same time, the qualified the circuit-breaker and grounding wire should be used.

IV. OPERATION OF BATHTUB

a. Water massage:

1. When the water level is higher than the highest jet, use the D switch to start the pump.
2. During the massaging, use the E switch to control the massage power, we can lower the power while clockwise.

b. Function of underwater light:

In the state of connecting to power, press switch F can turn on underwater light, the colour of underwater light is upon to the system random; Press switch F again, the underwater light will be turned off.

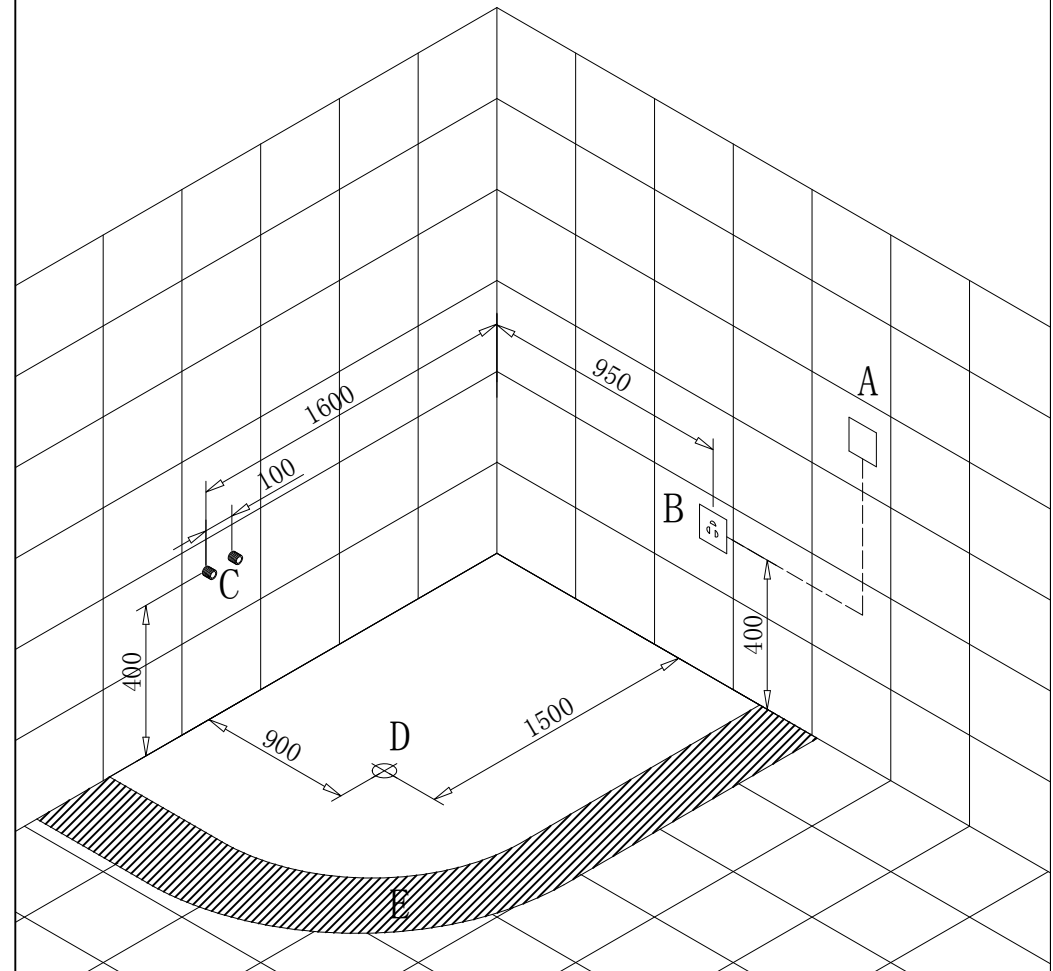


V. CLEANING AND MAINTENANCE

1. Normal liquid agent and soft cloth can be applied to bathtub for daily cleaning. This agent doesn't contain any acetone and ammonia and it is forbidden to use sterilization solution that contains formaldehyde.
2. A scar or scratch on the surface of bathtub can be polished by only 2000# wet sandpaper, and then apply toothpaste and clean off with a soft cloth to keep it shining.
3. The water sediment left on the surface of bathtub can be cleaned up with weak acid detergent, such as lemon juice, min-heated wax, soft cloth.
4. Pls remove the backflow screen after it gets clogged with hair and other stuff.
5. Gilded or chrome plated parts need to wipe not too often.
6. Don't use a rough tool or detergent containing chemical dissolvent or grains to clean the surface of bathtub.
7. It should empty water out completely and cut power off just after use.
8. Don't strike or scratch the surface of the bathtub with hardware or knives. Don't put a burning cigarette end or higher than 70°C hot stuff into bathtub.

VI. SAFETY INSTRUCTION

1. Installations of Electric component parts on the bathtub should be finished with the qualified technicians according to INSTRUCTION.
2. Electric parameters should be conformable with national requirement. Leading power cable should have a circuit-breaker and ensure the grounding wire stable and safe. And ensure that switch, power socket-outlet and plug should be waterproof.



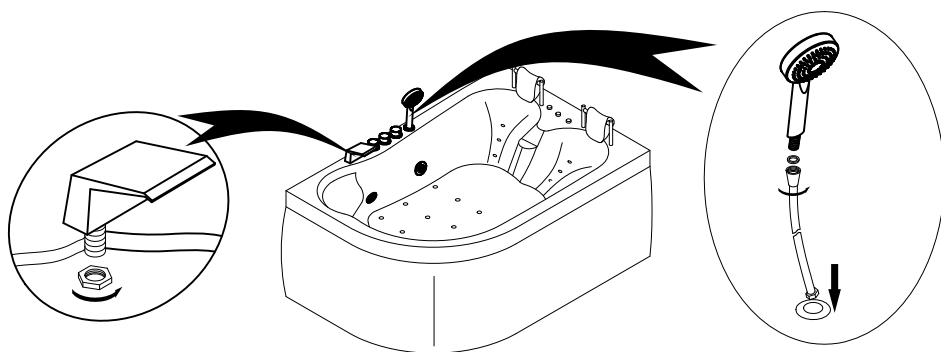
ELECTRICAL SPECIFICATIONS

Appliance Name	Rated Voltage	Rated Hertz	Rated Watt
Water pump	AC220V	50Hz	1125W

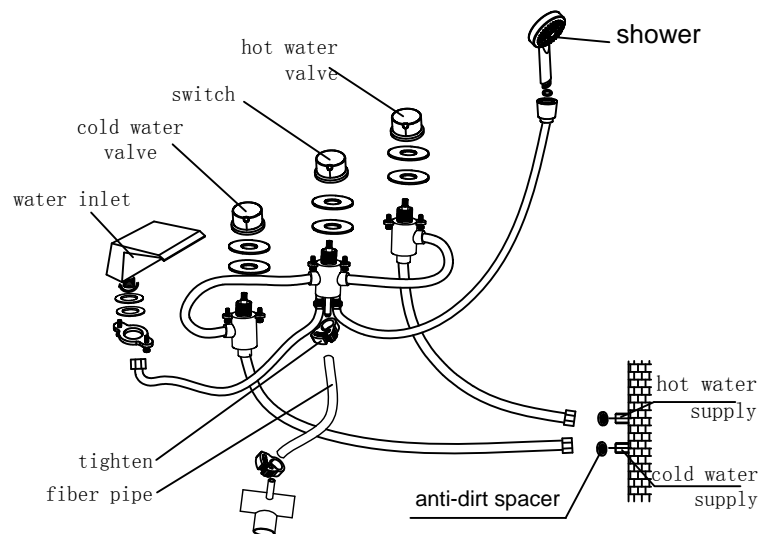
The circuit-breaker should be installed at leading power switch, its cable shouldn't be for the temporary purpose, and should be protected with good grounding wire. The cross-section area of power cable should not be less than 2.5mm², the power supply facility should conform to the national requirement, (Circuit-breaker unit will be provided by the user himself/herself), and grounding wire should be fixed with the massage bathtub at metal hob marked a symbol of "Grounding"

III. BATHTUB INSTALLATION

1. Accessories installation

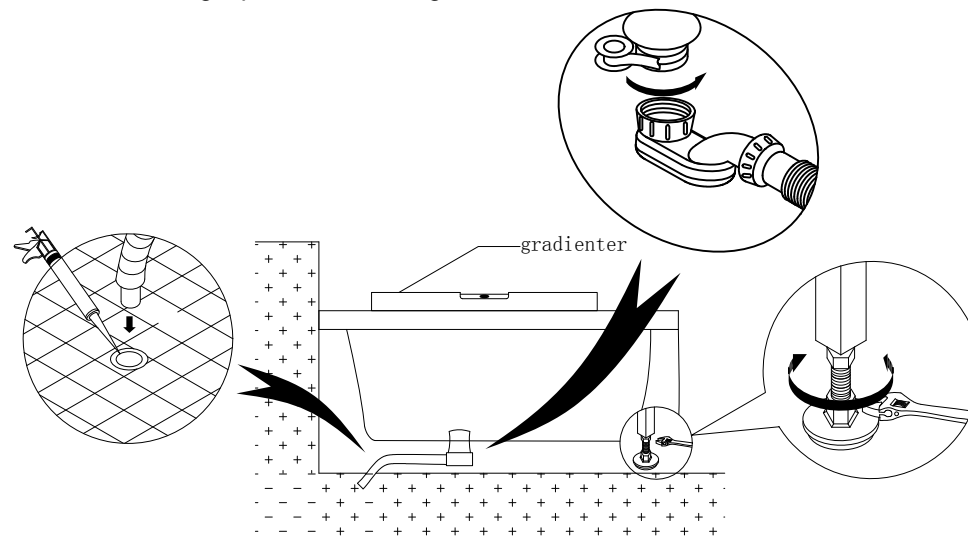


2. Hose connection

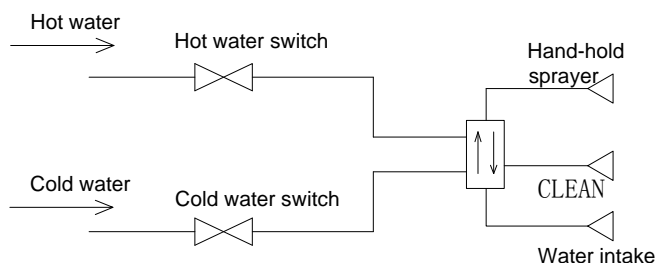


3. Drainage installation

Adjust the bottom bolt to keep on the even level at top side of its body, then connect flexible extension pipe with end of bathtub drainage and insert the other end of extension pipe into sewage pipe on floor, followed with the silica gel per as in the diagram.



4. Water supply diagram



IV. OPERATION INSTRUCTION

Function of switch :

1. Switch "A" get cold water .Switch" C" get hot water . Adjust them to an appropriate temperature .
2. Turn Switch "B" to perform the alternative function between water intake and hand-hold sprayer
3. please turn off switch of cold or hot water as soon as bath is over

